



# VIEW TRADE

## US & Canada

### Trading Platform Manual

**International Equity Trading Desk**

**+972-3-519-7932**

**Monday-Friday 9:00-23:00**

# Main Window

IBI  
TRADE

Buying power

Buying power: \$ 0.00

Main Index quotes

Quick stock search

In this window you can see your portfolio and get the latest data on the financial markets

Dow Jones 25,317.41 -126.93 (-0.50%) S&P 500 2,755.88 0.00 (0.00%) NASDAQ 100 ETF 173.91 0.00 0.00%

10/23/18 4:32 AM EDT US Markets are closed Logout

Account: Margin 20min delayed quotes

Enter symbol or command find ?

Home My Account Trading Orders Resea

Settings

Your accounts

X  
Enter account number or name.

Welcome back, IBIDEMO01

Last login: Oct 22, 2018 9:28:30 AM

### Account balance

Available buying power \$ 0.00

### Portfolio overview

Portfolio value \$ 0.00

Today's gain/loss 0.00

Realized profit/loss —

Unrealized gain/loss 0.00

### Markets

Dow Jones 25,317.41 -126.93 -0.50%



Nasdaq 100 ETF 173.91 0.00 0.00%

S&P 500 2,755.88 0.00 0.00%

Market Volatility 22.63 2.99 15.22%

Europe 304.41 -4.49 -1.45%

Asia 50 155.15 -3.34 -2.11%

### Earnings releases

Symbol	Date/Time	Last
<a href="#">ABG</a>	10/23/18 Morning	59.55
<a href="#">AGR</a>	10/23/18 Evening	48.70
<a href="#">AI</a>	10/23/18 Evening	8.42
<a href="#">ALKS</a>	10/23/18 Morning	38.86
<a href="#">AMP</a>	10/23/18 Evening	133.17
<a href="#">ARCH</a>	10/23/18 Morning	94.85
<a href="#">ARR</a>	10/23/18 Evening	20.58
<a href="#">ASTE</a>	10/23/18 Morning	47.27
<a href="#">ATI</a>	10/23/18 Morning	26.82
<a href="#">AVY</a>	10/23/18 Market	96.97
<a href="#">AXE</a>	10/23/18 Morning	63.34
<a href="#">BHBK</a>	10/23/18 Morning	23.64
<a href="#">BIIB</a>	10/23/18 Morning	315.54

Quick quotes clear

Go

Messages and notifications

# Quick Search

IBI  
TRADE

Account:  Margin: 20min delayed quotes  
Buying power: \$ 0.00 You do not hold BAC No open orders for BAC

Enter symbol or command

[Home](#) [My Account](#) [Trading](#) [Orders](#) [Research](#) [My Menu](#)

## Bank of America Corporation (NYSE: BAC, ISIN: US0605051046) 20MIN DELAYED QUOTES

[Banks](#) Earnings: [Jan 17, 2019](#) Market cap: 279,187.06M P/E: 14.75

**27.38**  
0.00 (0.00%)  
4:00:18 PM  
Oct 22, 2018

Bid —  
Bid Sz —  
Ask —  
Ask Sz —

Prv Close	27.38	52 Wk Hi	33.05
Open	0.00	52 Wk Lo	25.81
Day High	0.00	Volume	4,928
Day Low	0.00	30 D Av Vol	65,519,365

Trading data

[Chart](#) [Profile](#) [Option chain](#) [News](#) [Upgrades/Downgrades](#) [Performance](#) [ETFs](#) [Ownership](#) [Fundamentals](#) [More...](#)

Trade BAC CTRL+ALT+

Quick transaction button

[Line](#) [Candle](#)

[Intraday chart](#) [1m](#) [3m](#) [6m](#) [1y](#) [2y](#) [3y](#) [4y](#) [max](#)

Bollinger  RSI  MACD  Slow Stoch  Fast Stoch  BAC vs. S&P 500

Technical analysis options



After entering the stock name or symbol here, the research tab will open and display all the data about the stock.

[US Market Overview](#)

[Canadian Markets](#)

[Sectors & Industries](#)

[IPO Center](#)

[ETF Center](#)

[ADR Center](#)

[World Markets](#)

[Market News](#)

[Upgrades/Downgrades](#)

[Stock Screener](#)

[Market Dashboard](#)

[Earnings Calendar](#)

[Option Radar](#)

[Stock Research](#)

[Stock List](#)

[Stock Wall](#)

Your accounts

X  
Enter account number or name.

# Trading

IBI  
TRADE



Account:  Margin 20min delayed quotes  
Buying power: \$ 0.00

[Home](#) [My Account](#) [Trading](#) [Orders](#) [Research](#) [My Menu](#)

[Equities](#)  
[Options](#)

## Trade Equities

Trading with account

Position Type  Cash  Margin

Action

Symbol  [Info](#)

Quantity

Type

Limit price

Duration  Day  GTC

Fill type  ANY  AON

Order value

OCO (One Cancels Other) order

[Continue >](#)

Quote type  
Can be upgraded - an additional charge will apply

Click on 'Trading' -> 'Equities'

Buy / sell transaction  
Short sale - stock lending  
Buy cover - close a short position

Choose your order type  
LIMIT  
MARKET  
STOP  
STOP LIMIT  
for more information on order types see the following page

'Good to cancel' order - this order is valid until execution or for up to 12 months. You can cancel it in any time free of charge.

OCO order  
more details on the following page

Your accounts  
   
Enter account number or name.

Quick quotes [clear](#)

[Messages and notifications](#)

# Order types

**LIMIT** - the most common order , buy / sell at a specific price defined by the user.

**MARKET** - a more aggressive order than 'LIMIT' - buy / sell at the price offered in the market when the order was sent, without any limit.

**STOP** - 'stop market' order, also known as 'stop loss'. This order is activated when the stock reaches the price set by the user. When the stock reaches the price that the user has set, a sell/buy 'MARKET' order will be sent to the market. This is in order to limit the loss on the position.

For example: A trader buys a stock at a price of \$50, and then sends a 'stop loss' order at a trigger price of \$45 to protect himself in the event of a fall in price. If the stock price falls to \$45 and lower, the system will send a 'MARKET' order. Note that the stocks can be sold at price lower than \$45 because it's a 'MARKET' order.

**STOP LIMIT** - a combination of 'STOP' and 'LIMIT' orders except here the user defines a specified price at which to buy/sell the stocks. When the stock reaches the specified price, a sell/buy 'LIMIT' order will be sent to the market. This order is used to cut losses at a specific price.

For example: A trader buys a stock at a price of \$50, and then sends a sell 'STOP LIMIT' order at a trigger price of \$45 and a limit price of \$43 to protect himself in the event of a fall in price.

If the stock price falls to \$45 and lower, the system will send a 'STOP' order with a limit price of \$43.

**OCO** - 'One Cancels Other' - an advanced order which allows the user to send 'stop loss' and 'take profit' orders for the same asset and when the asset reaches either the stop loss or take profit price, the other order is canceled.

For example: If a trader buys a stock at a price of \$100, he can then send an OCO order as follows:

Sell 'LIMIT' order at trigger price of \$105 (take profit).

Sell 'STOP' at trigger price of \$92 (stop loss).

If one of these orders is executed, the other one will be canceled.

# Options Trading (requires permission)

IBI  
TRADE

Account:  Margin 20min delayed quotes  
Buying power: \$ 0.00

[Home](#) [My Account](#) [Trading](#) [Orders](#) [Research](#) [My Menu](#)

## Trade Options

Trading with account

**Regular**

Action

Underlying symbol  [Exp Date + Str Px](#)

Option type

Select expiration date and strike price from prefilled values below

Expiration date

Strike price

Number of contracts

Type

Limit price

Duration  Day  GTC

Fill type  ANY  AON

Order value

Margin requirement ...

Click on 'Trading' -> 'Options'

Buy to open - buy options  
Buy to close - buy back short options  
Sell to open - open a short position in options  
Sell to close - sell an option from your portfolio

Choose an expiration date and strike price (exercise price)

# Order Confirmation

**IBI**  
TRADE

After pressing 'continue' button, the order preview window will open. Here you can see all the order details before sending it to the market.

[Home](#) [My Account](#) [Trading](#) [Orders](#) [Research](#) [My Menu](#)

## Order preview

Account	
Symbol	<b>BAC</b> Bank of America Corporation
Last price	<b>27.38 ( 0.00 )</b>
Bid / Ask	<b>26.60 / 26.65</b>
Action	<b>Buy</b>
Quantity	<b>1</b>
Type	<b>Market</b>
Expected price	<b>26.65</b>
Order value	<b>26.65</b>
Duration	<b>Day</b>
Fill type	<b>ANY</b>

[< Make corrections](#) [I confirm this order >](#)

# Cancel / Replace order

Click 'orders' tab

Orders

Settings

## All open orders

Click this tab to see all orders waiting for execution today and 'GTC' orders

Symbol	Action	Qty	Company name	Type	Exp Price	Last	Sts	Drtn	Entered	Cxl	Order Ref
	Buy	50		Limit	80.00	0.00	B	Day	Sep 23, 2014 4:12:42 PM		BV000013
	Buy	2,000	Alpha Pro Tech Ltd	Market	2.62	3.50	A	Day	Feb 3, 2015 11:30:07 AM		BV1063360
	Buy	2,000	Alpha Pro Tech Ltd	Market	2.60	3.50	W	Day	Jan 23, 2015 5:52:47 PM	<input type="checkbox"/>	<a href="#">C/R</a> BV1063152
	Buy	2,000	International Busine	Limit	180.00	130.02	W	Day	Sep 23, 2014 4:14:30 PM	<input type="checkbox"/>	<a href="#">C/R</a> BV1059194
	Buy to Open	2,000	FTI Consulting Inc Mar, 18	Limit 291.00 call	0.10	11.87	W	Day	Feb 25, 2015 5:00:08 PM	<input type="checkbox"/>	<a href="#">C/R</a> BV1064615
				Debit	2.00	0.00	W	Day	Aug 25, 2016 12:43:07 PM	<input type="checkbox"/>	<a href="#">C/R</a> BV1099347
	Buy to Open	5		0 CALL							
	Sell to Open	5		0 CALL							

Mark the square and press the red button 'cancel selected orders' in order to cancel the order.  
Click the button C/R to update the order's details.

Cancel selected orders



# Create Watch Lists

Home My Account Trading Orders Research My Menu

Account balances  
Portfolio  
**Watch lists**  
Account history

Watch lists

**demo**  
[Delete](#) | [Rename](#)

Add new watchlist  
 **Add**

**demo watch list**

**Add symbol** You can add up to 20 symbols per watch list.

Symbol	Last	High/Low
<a href="#">BAC</a> D	27.38	0.00 / 0.00
<a href="#">EA</a>	101.36	0.00 / 0.00

Indicators

- D Stock pays dividend
- Up Recently upgraded
- Dn Recently downgraded
- E Earnings release soon
- Oa Other action
- \* Delete symbol from watch list

Click 'my account' -> 'watch lists'

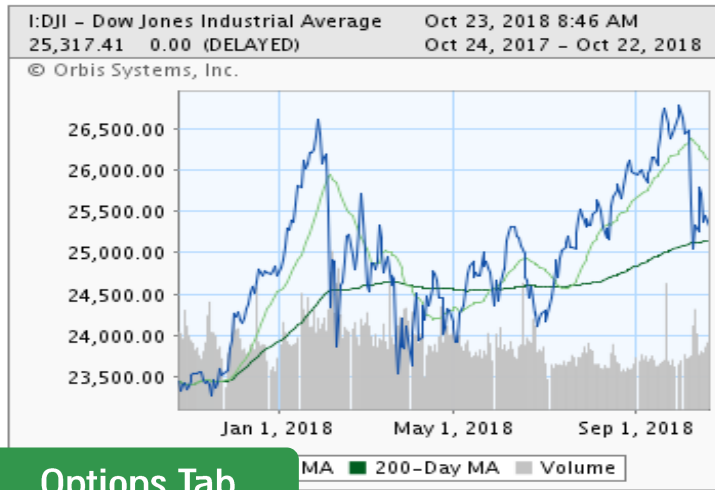
Add a new watch list

# Research Tab

Click on this tab to view the latest equity research and price data

## Overview of US markets

**Overview** [Dow Jones](#) [S&P 500](#) [NASDAQ-100](#) [China](#) [Israel](#) [Russia](#)



**Options Tab**

NYSE/Nasdaq/AmEx Most Active Winners

Symbol	Company name	Last	Change (\$/%)	Volume
<a href="#">AMD</a>	Advanced Micro Devices Inc	25.02	1.36 5.75%	112,528,169
<a href="#">BAC</a>	Bank of America Corporation	27.36	-0.96 -3.39%	77,693,472
<a href="#">SPY</a>	SPDR S&P 500	275.17	-1.08 -0.39%	73,233,796
<a href="#">VXX</a>	iPath S&P 500 VIX Short Term Futures TM ETN	34.54	0.49 1.44%	58,872,257

### US Market Overview

[Canadian Markets](#)

[Analyst Ratings](#)

[Sectors & Industries](#)

[IPO Center](#)

[ETF Center](#)

[ADR Center](#)

[World Markets](#)

[Market News](#)

[Stock Screener](#)

[Market Dashboard](#)

[Earnings Calendar](#)

[Option Radar](#)

[Stock Research](#)

[Stock List](#)

[Stock Wall](#)

The purpose of this document is to provide information only. It and the information provided herein should not be construed as counsel or an invitation to purchase (or sell) securities and/or financial assets, nor is it intended to replace counsel that takes into account the special characteristics and needs of any specific person or client. Neither I.B.I. Investment House nor its employees shall bear any responsibility for any damage, direct or indirect, that may be caused to any party as a result of reliance on this document. This document is the property of Israel Brokerage & Investments, I.B.I. and may not be copied, reproduced, quoted, disseminated or published in any manner, in whole or in part, without express prior written permission of Israel Brokerage & Investments, I.B.I.