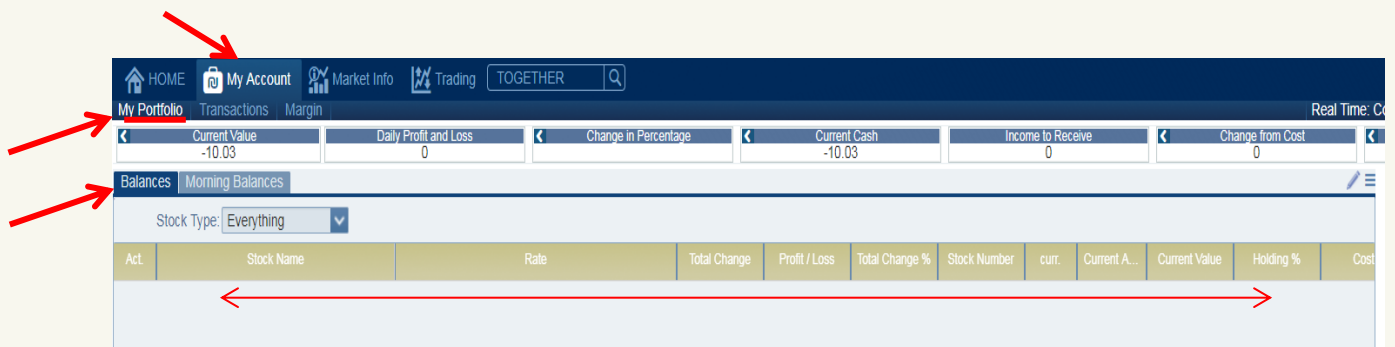


## Quick Guide to SPARK Trading Platform

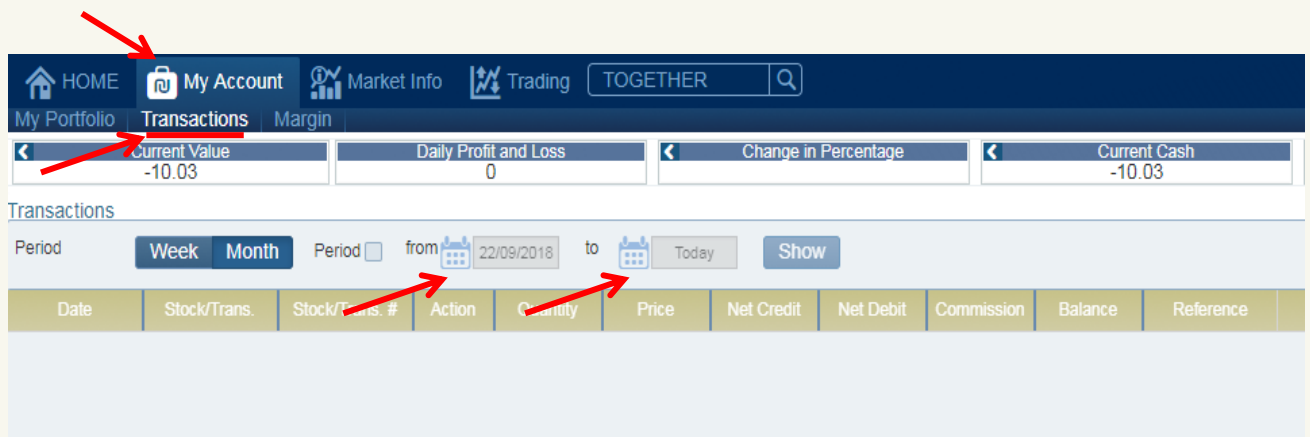
- After the login to the platform, a personal window will pop up.
- On the left side you will be able to see which sectors the account is permitted to.



- Account Status - on the left side you can find a tab for 'My Account'.
- On that tab you can find your start of day balance, online balance and account transactions.
- Balance - on your balances tab, your online holdings will be shown with specific details in columns for every stock.



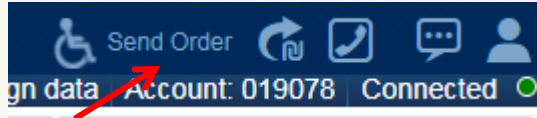
- Transactions tab - you will be able to see your transactions in detail, including commissions and tax deducted for each transaction that was made.
- You can filter your transactions for a chosen time period.



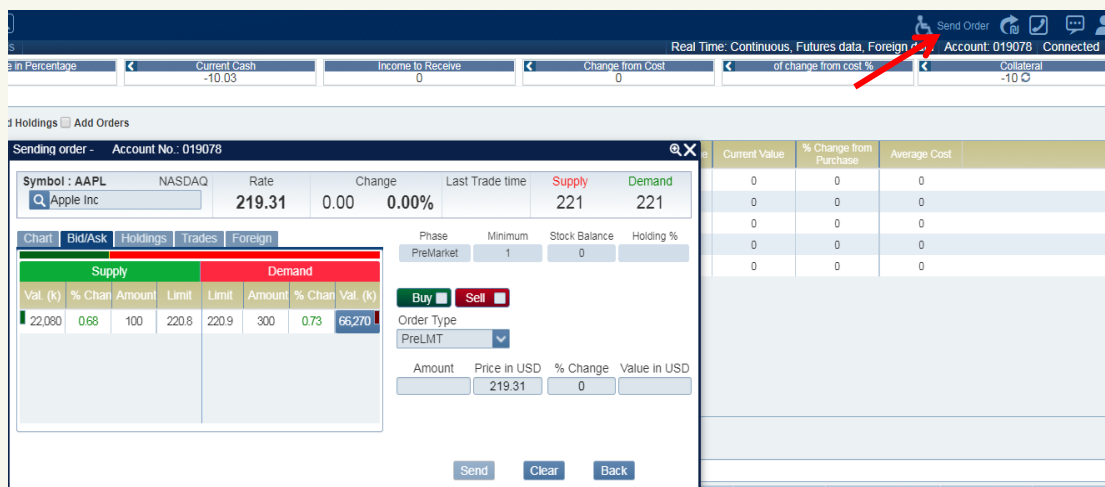
## Trading in the Israeli and the US Markets

You can execute the trades in several ways:

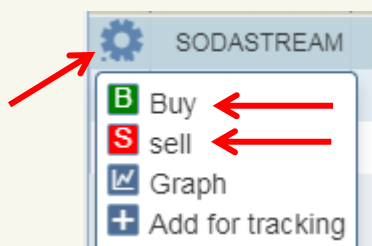
1. On the top right hand corner you will see 'Send Order', which directs you straight to the trading window.



- Send Order window - the window shows wide range data of the chosen share, such as bid/ask, change in percentage, share quantity and balance, different orders and entering details for trade.
- In this window, you can trade in Israeli and US shares by choosing the stock in the search row.

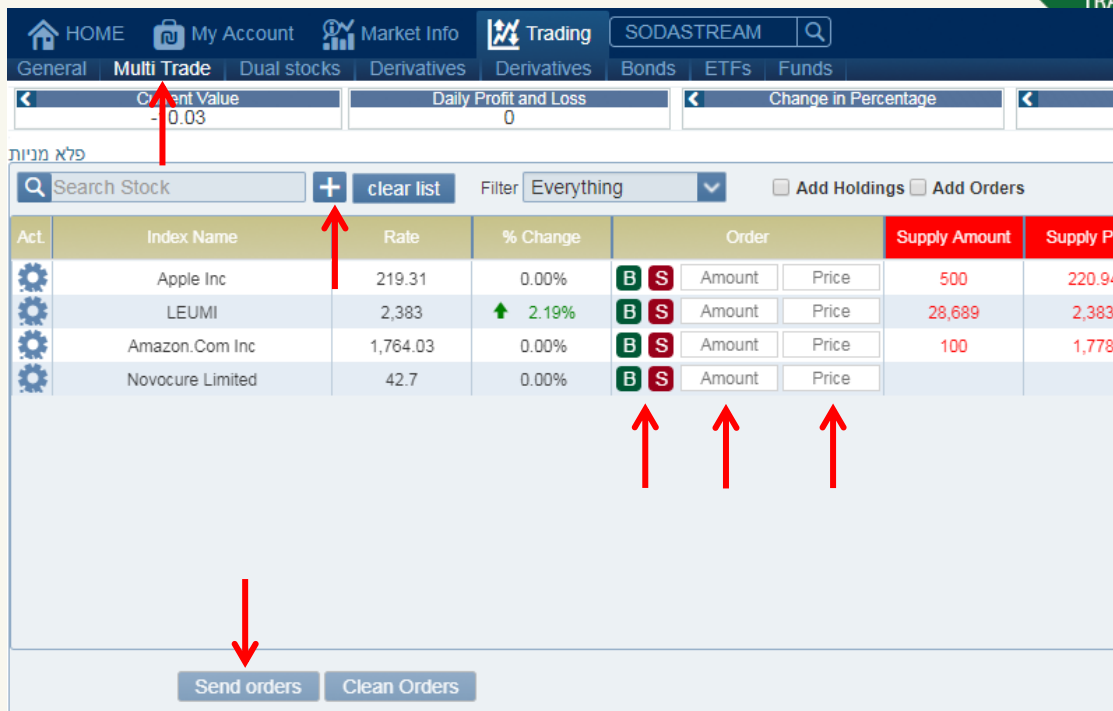


2. Clicking on the gear icon which appears next to every share and by choosing Buy / Sell, will open a window to send the order. This can be done from every page on the platform.



3. Click on the Trading tab -> Multi Trade -> Add share to list -> Quick trade

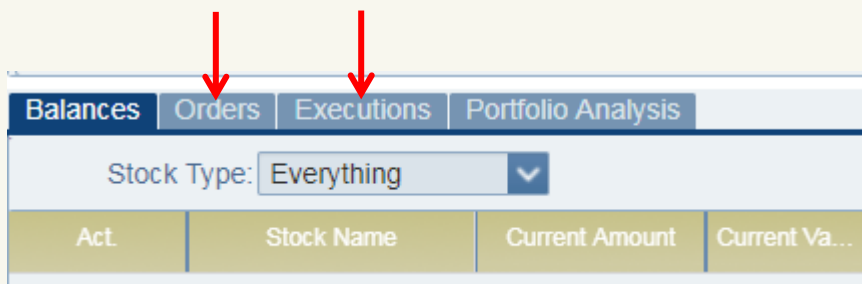
The purpose of this document is to provide information only. It and the information provided herein should not be construed as counsel or an invitation to purchase (or sell) securities and/or financial assets, nor is it intended to replace counsel that takes into account the special characteristics and needs of any specific person or client. Neither I.B.I. Investment House nor its employees shall bear any responsibility for any damage, direct or indirect, that may be caused to any party as a result of reliance on this document. This document is the property of Israel Brokerage & Investments, I.B.I. and may not be copied, reproduced, quoted, disseminated or published in any manner, in whole or in part, without express prior written permission of Israel Brokerage & Investments, I.B.I.



Act.	Index Name	Rate	% Change	Order	Supply Amount	Supply P
⚙️	Apple Inc	219.31	0.00%	B S Amount Price	500	220.94
⚙️	LEUMI	2,383	↑ 2.19%	B S Amount Price	28,689	2,383
⚙️	Amazon.Com Inc	1,764.03	0.00%	B S Amount Price	100	1,778
⚙️	Novocure Limited	42.7	0.00%	B S Amount Price		

### Orders and Executions

- The window appears in several places in the platform.
- Note that there are two different tabs: "Orders" and "Executions".
- The 'Orders' tab shows all the pending trades (which have not yet been executed), including continuous trades in the Israeli and US markets.
- The "Executions" tab shows the trades which have been executed in that same day.



Act.	Stock Name	Current Amount	Current Va...
------	------------	----------------	---------------

### Stocks Follow Up and Technical Analysis

- Click on "Market Info" => "Tracked Stocks"
- You will be able to put together a list of stocks to follow.
- The table shows more data of the chosen stocks will be shown.
- Technical Analysis - clicking on one of the stocks will open trading data and a graph on the left hand corner.
- In the technical analysis window, you can carry out several options such as: adding indicators, trend lines, Fibonacci calculators and more.

